

MS-LINE

**TACTILE SURFACE
GUIDELINES**



OLEJAR
tactile solution

MS-LINE

Individual tactile surface guidelines /guide strips/

Product description

Individual **tactile surface guidelines /guide strips/** in shape of longitudinal ribs are made of **brass** and ensure long lasting stable performance.

Tactile surface guidelines /guide strips/ are made with pins and without pins in a variety of designs with a possible plastic insert inserted into the product.

The system has already proved good in train stations, banks, universities, entrance areas, etc.



PURPOSE OF USE



MS-LINE

Tactile surface guidelines /tactile guide strips/ with a design of longitudinal projections in shape of ribs in a colour contrasting with the colour of the surrounding surface and functional arrangement of the longitudinal strips /ribs/ on the ground provide directional guidance.

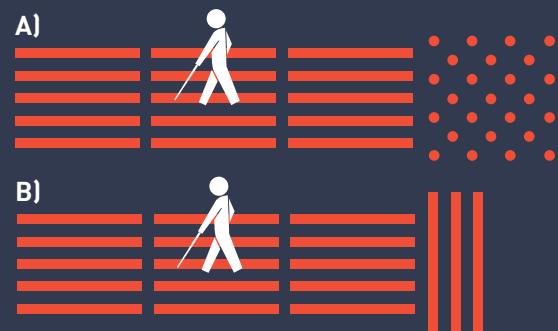
Tactile surface guidelines allow you to build guidance on the ground that is recognizable by legs and white stick and can be also detected visually.

Tactile surface guidelines help blind and visually impaired people to find their way with help of a longitudinal design. Tactile surface guidelines enable blind and visually impaired people to quickly and safely get from the starting point to their place of destination.

Structure of the guideline

Individual **tactile surface guidelines /surface guide strips/** fit harmoniously into the existing architecture and break the concept in an attractive way.

VARIANTS:



PRODUCT FEATURES OF /MS-LINE/

- Minimal impact on staff/pedestrians during installation
- Quick and easy installation using a template on all surfaces, including concrete, ceramic tiles, asphalt, wood floors and most other surfaces
- Embossed anti-slip surface, safe and non-slip
- Long-lasting product performance, impact resistant
- Low maintenance demands
- Walking possible immediately after installation, by full load after 24 hours
- They are modular and their universality allows endless configurations to adapt to new or existing surfaces and styles of design
- MS-LINE has a height of 3.5 and 5 mm, which ensures that there will be never any danger on the road
- MS-LINE offers the specifiers the possibility to maintain the aesthetics of the substrate without limitation of tactile performance



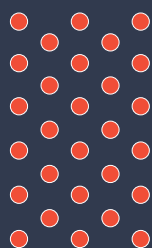
LUMINANCE CONTRAST

In line with international and European standards the luminance contrast between the tactile surface guidelines and the surrounding substrate must be minimum 30%. MS-LINE is available in a variety of colour inserts that allow specifiers to choose the most appropriate contrast values for a given installation.

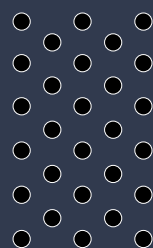
COLOURS

Choose the colour of the filling

Individual tactile surface guidelines are available in a number of standard and the most commonly used colours.



red



black



grey



white



yellow

Customers can also request a custom colour (with respect to the minimum amount) in order to make the tactile studs and strips fit into any design, style and colour scheme.

MS/P1

Individual tactile surface guidelines /guide strips/ from brass

Individual **tactile surface guidelines /tactile guide strips/** in shape of longitudinal ribs are made of brass and ensure long lasting stable performance.



MS-LINE / INDIVIDUAL TACTILE SURFACE GUIDELINES							
MODEL	DIMENSION	HEIGHT	PRODUCT	WEIGHT	MATERIAL	COLOUR	PRODUCT CODE
MS/P1	25x140mm	5mm	with pin	110g	brass	brass	MS/P1-K/25/140/5
	25x140mm	5mm	without pin	108g	brass	brass	MS/P1/25/140/5
	25x140mm	3,5mm	with pin	108g	brass	brass	MS/P1-K/25/140/3,5
	25x140mm	3,5mm	without pin	105g	brass	brass	MS/P1/25/140/3,5

APPLICATIONS

of tactile surface guide strips

Versatile and flexible

Enormous variability and flexibility of individual tactile surface studs and guidelines means that they can be easily fitted into almost any construction without limitation of creative design and architecture. Whether used in new or old constructions, they work exactly the same way.

According to the law against discrimination of the blind and visually impaired, it is required to ensure the placement of tactile surface warning strips in internal and external areas open to the public.

Guidelines are placed in places with movement of people (such as lobbies, stations, subway, hospitals, shopping centres, squares, courtyards,...), and in all areas, which are described in the decree of the country. They are installed on any surface such as:-wood, marble, granite, asphalt, concrete, tiles, PVC and other materials, in widths according to the decree of the country.

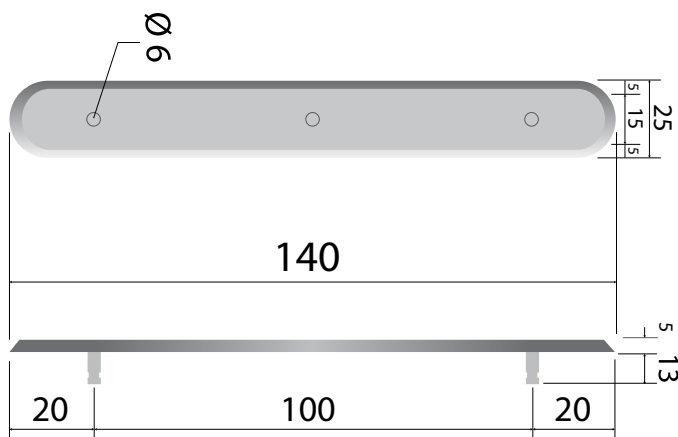
They are designed to meet international and European standards.

/Individual tactile surface guidelines /guide strips/ are made with the following dimensions/

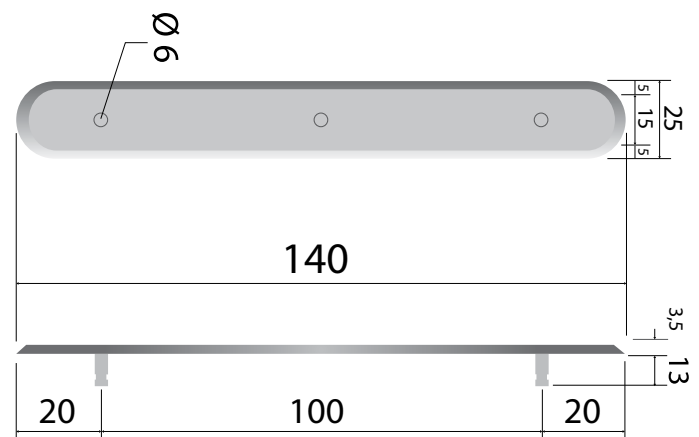
ISO 23599

Individual tactile surface guidelines /guide strips/ from brass with pin

1. MS-P1-K/25/5



2. MS-P1-K/25/3,5

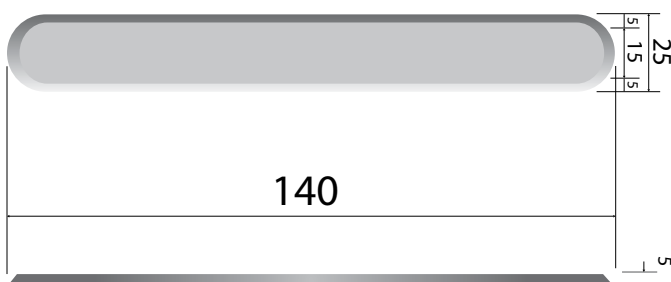


MATERIAL: brass

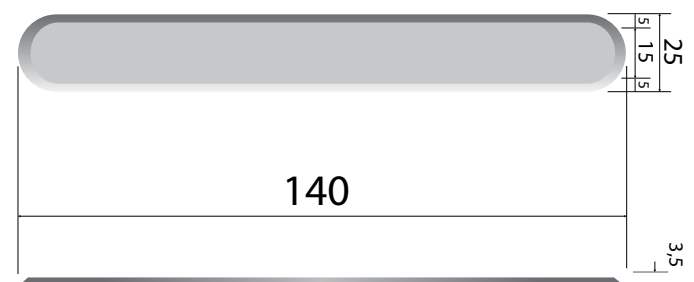
INSTALLATION: drilling/sticking

Individual tactile surface guidelines /guide strips/ from brass without pin

1. MS-P1/25/5



2. MS-P1/25/3,5



MATERIAL: brass

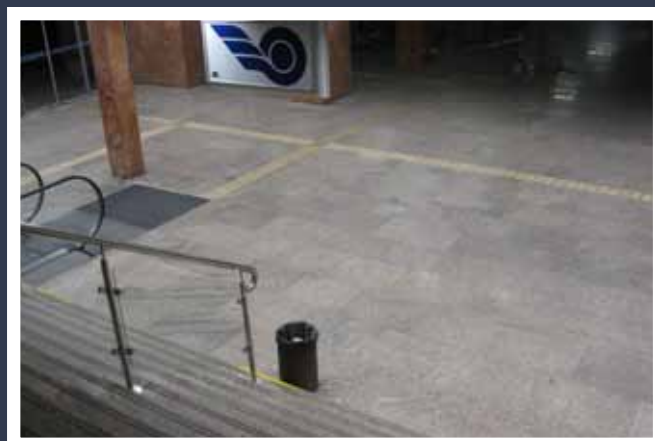
INSTALLATION: sticking

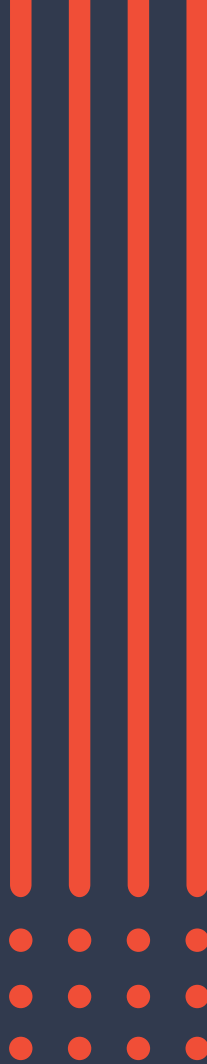
SAMPLE IMPLEMENTATIONS

MS-LINE



IMPLEMENTATION - railway station Poprad /Slovakia/





OLEJÁR, spol. s.r.o.

086 36, Nižná Polianka 65, Slovakia

Tel.: +421 905 560 158

E-mail: info@olejartactile.com

www.olejartactile.com

