



**KER-LINE**  
**TACTILE SURFACE**  
**GUIDE PAVING**



# KER-LINE

## Tactile surface guide paving from highly resistant ceramics

### Product description

**Tactile surface guide paving** with a design in shape of longitudinal ribs is made of **highly resistant ceramics**. Raw materials of these tiles are clay, quartz, feldspar, ceramic stone and are mixed with coloured pigments. They are melted and completed at about 1200°C and formed by the method of dry pressing. They are resistant to acids, solvents, ozone and oxidation. They also offer good abrasion resistance, excellent resistance to weathering, ozone, sunlight and oxidation, excellent resistance to alcohol, alkalis and acids, very good colour fastness.



## PURPOSE OF USE



### KER-LINE

The **tactile surface guide paving** with a design of longitudinal projections in shape of ribs in a colour contrasting with the colour of the surrounding surface and functional arrangement of the longitudinal strips /ribs/ on the ground provide directional guidance

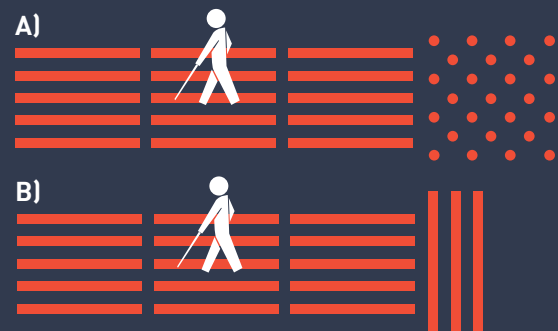
**Tactile guide paving** allows you to build guidance on the ground that is recognizable by legs and white stick and can be also detected visually.

**Tactile surface guide paving** helps blind and visually impaired people to find their way with help of a longitudinal design. Tactile surface guidelines enable blind and visually impaired people to quickly and safely get from the starting point to their place of destination.

### Structure of the guide paving

Individual **tactile surface guide paving** fits harmoniously into the existing architecture and breaks the concept in an attractive way.

### VARIANTS:

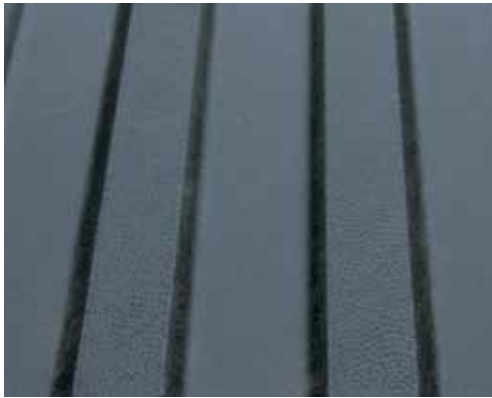


## PRODUCT FEATURES OF /KER-LINE/

- Installation by paving
- Embossed anti-slip surface safe and non-slip
- Long-lasting product performance, impact resistant
- Low maintenance demands
- UV stable - stability ensures colour stability of the product indoors and outdoors

## LUMINANCE CONTRAST

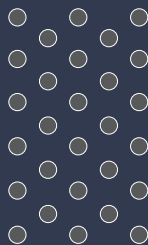
In line with international and European standards the luminance contrast between the tactile surface guide paving and the surrounding substrate must be minimum 30%. KER-LINE is available in a variety of colour inserts that allow specifiers to choose the most appropriate contrast values for a given installation.



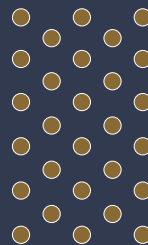
## COLOURS

### Choose the colour of the paving

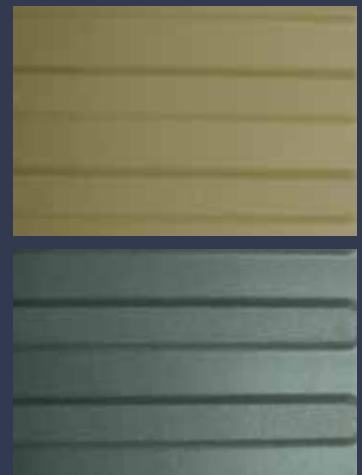
Tactile surface guide paving is available in two colours.



grey



brown



Customers can also request a custom colour (with respect to the minimum amount) in order to make the tactile stripes fit into any design, style and colour scheme.

# APPLICATIONS

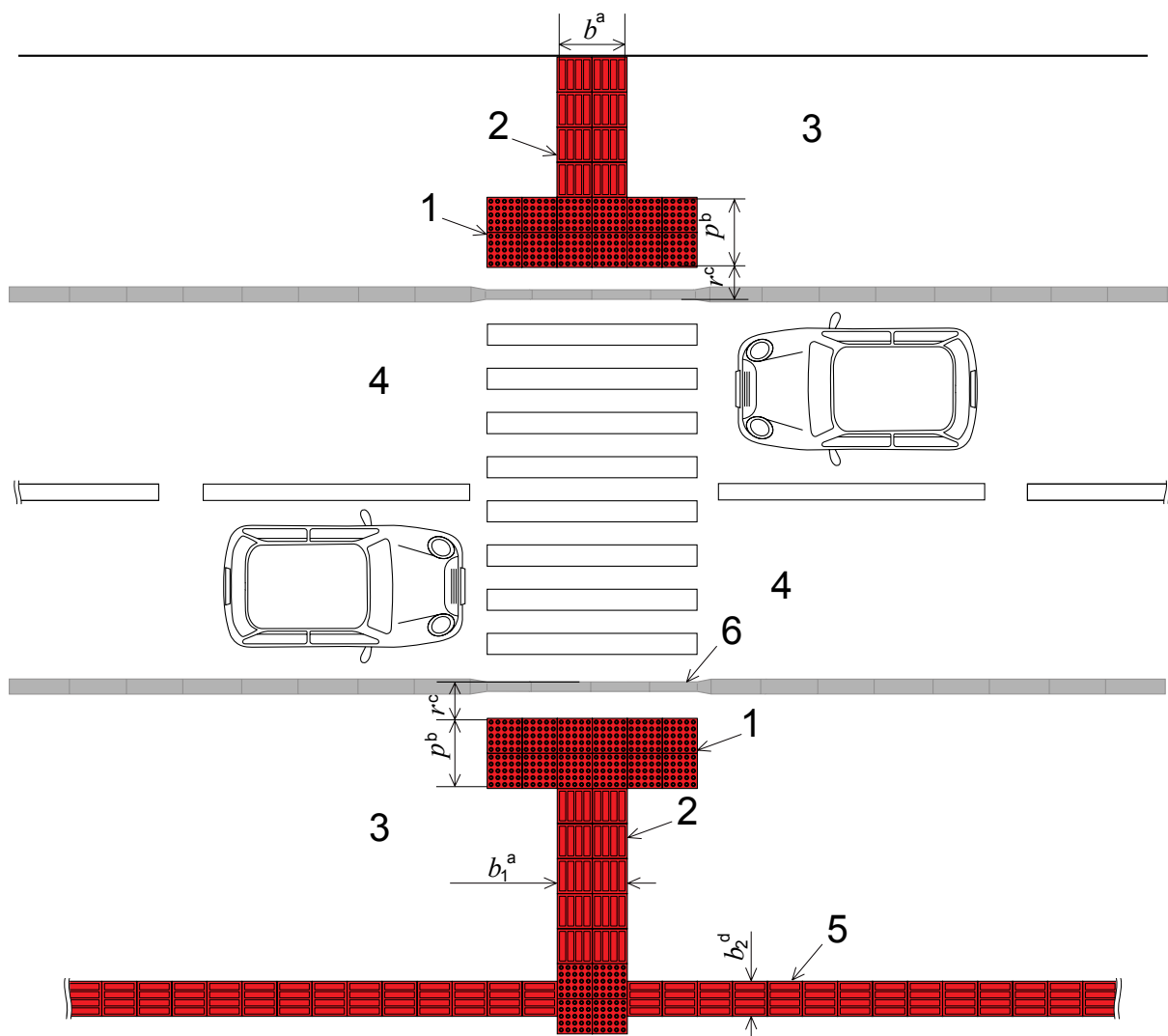
## of tactile surface guide paving

### Versatile and flexible

Guide paving can be easily fitted into almost any construction without limitation of creative design and architecture. Whether used in new or old constructions, it works exactly the same way.

According to the law against discrimination of the blind and visually impaired, it is required to ensure the placement of tactile surface guide paving in internal and external areas open to the public.

**Guide paving** - is placed on the top and bottom of each arm of the stairs, on ramps in front of escalators, on each side of pedestrian crossings, along platforms of public transport (such as bus stops, train platforms, subway...), sea and river transport and in all areas, which are described in the decree of the country.



## LIST OF TACTILE SURFACE GUIDE PAVINGS FROM CERAMICS



KER/P1



KER/P1

## KER/P1



### Tactile surface guide paving form ceramics

**Tactile surface guide paving** with a design in shape of longitudinal ribs is made from highly resistant ceramics and ensures long lasting stable performance.

#### KER-LINE / TACTILE SURFACE GUIDE PAVING

MODEL	WIDTH	LENGTH	HEIGHT	MATERIAL	COLOUR	PRODUCT CODE
KER/P1	300mm	300mm	15mm	ceramics		KER/P1-GR/300/300



### Tactile surface guide paving form ceramics

**Tactile surface guide paving** with a design in shape of longitudinal ribs is made from highly resistant ceramics and ensures long lasting stable performance.

#### KER-LINE / TACTILE SURFACE GUIDE PAVING

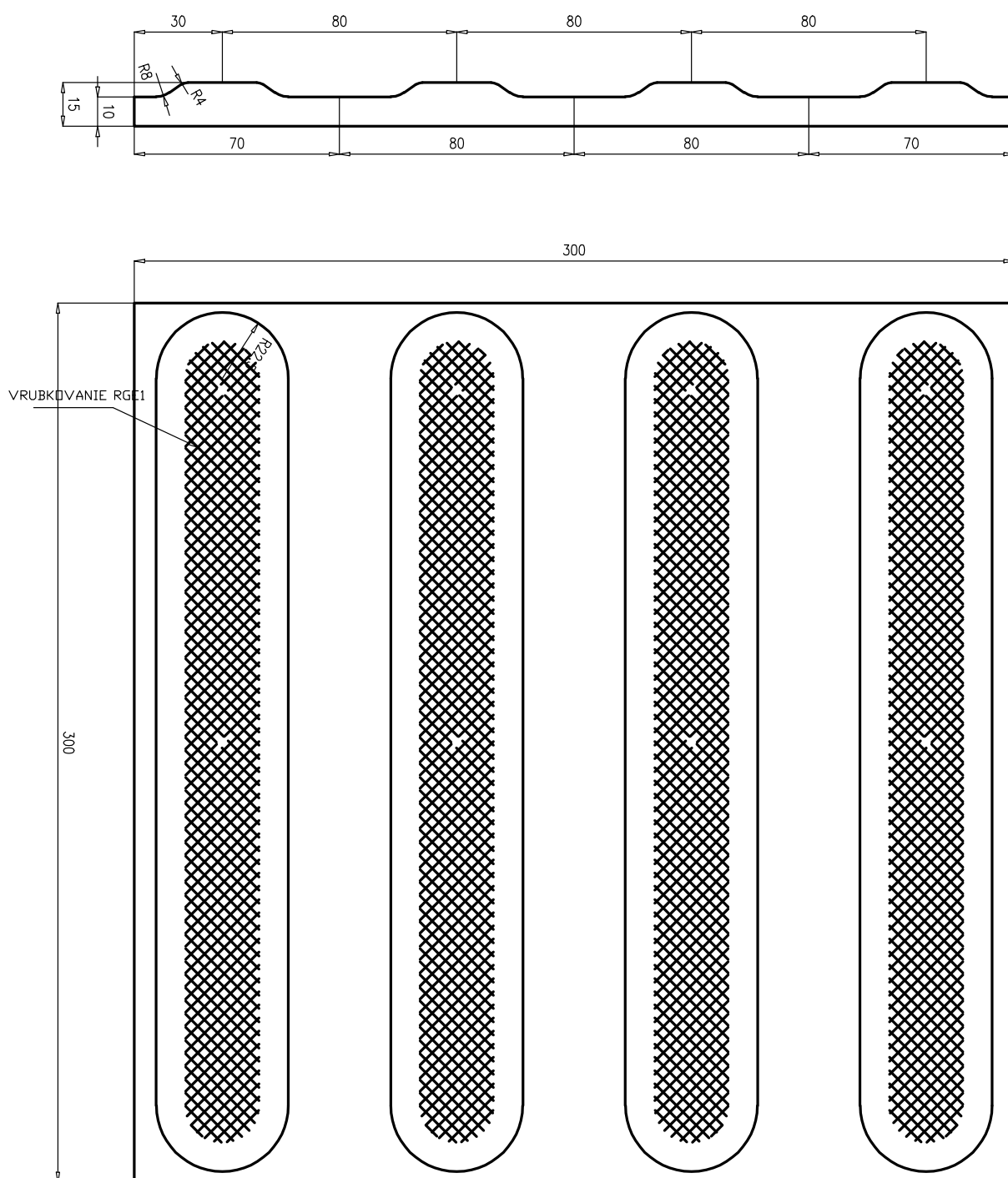
MODEL	WIDTH	LENGTH	HEIGHT	MATERIAL	COLOUR	PRODUCT CODE
KER/P1	300mm	300mm	15mm	ceramics		KER/P1-YE/300/300

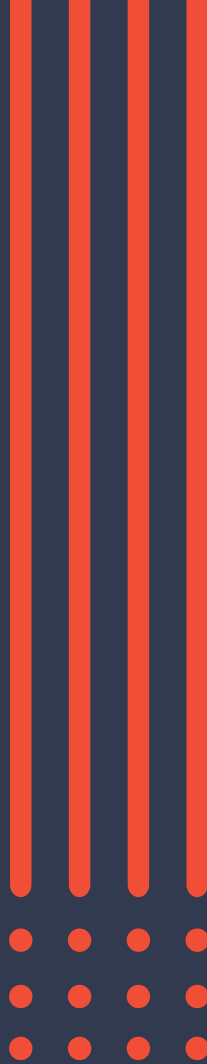
They are designed to meet international and European standards.

/Tactile surface guide paving is produced with the following dimensions/:

## ISO 23599

### KER/P1





**OLEJÁR, spol. s.r.o.**

086 36, Nižná Polianka 65, Slovakia

Tel.: +421 905 560 158

E-mail: [info@olejartactile.com](mailto:info@olejartactile.com)

[www.olejartactile.com](http://www.olejartactile.com)

